

MONTHLY MEMBERSHIP PROGRESS REPORT

LOCATION TENNESSEE

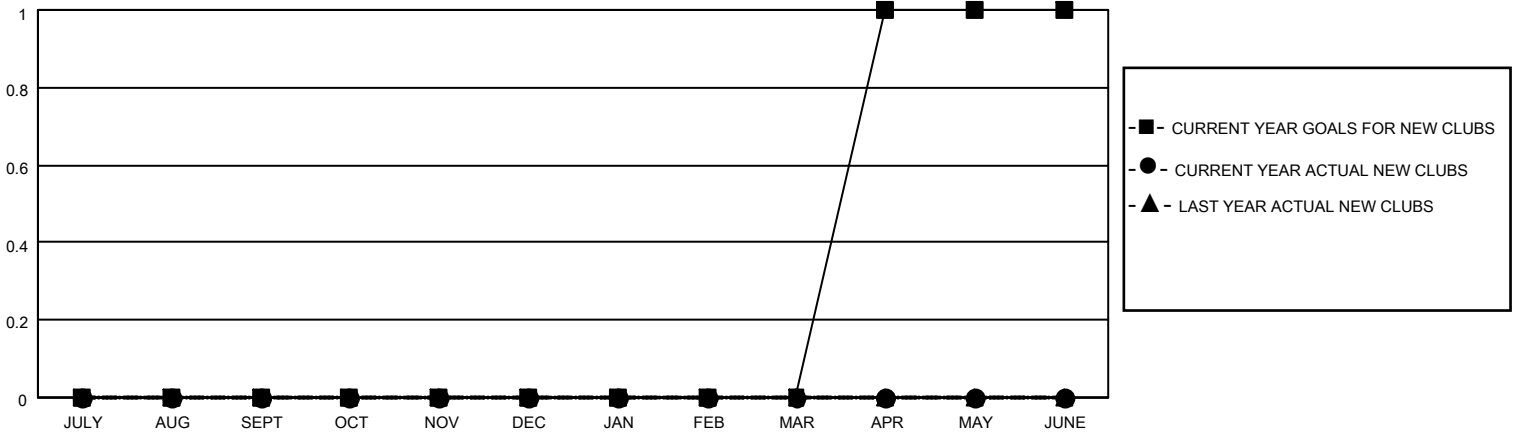
District 12 S

Results as of: 6/30/2023

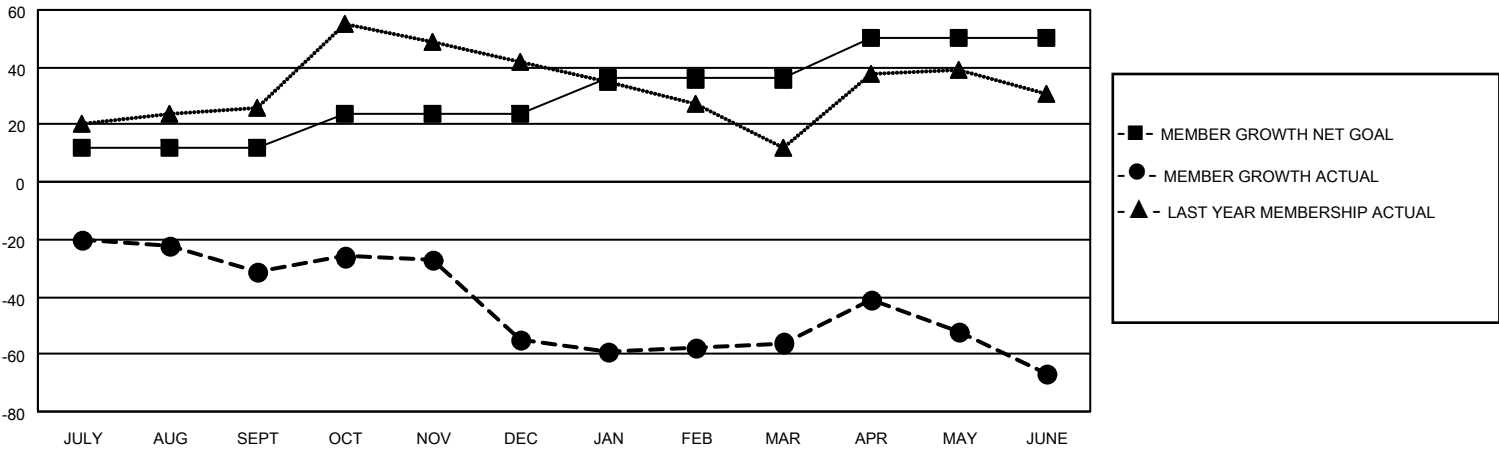
Clubs			
RESULTS FOR 2022-2023			
QUARTER	NEW CLUB GOAL	NEW CLUBS	DROPPED CLUBS
JULY/AUG/SEPT	0	0	0
OCT/NOV/DEC	0	0	0
JAN/FEB/MAR	0	0	0
APR/MAY/JUNE	1	0	0

Members			
RESULTS FOR 2022-2023			
QUARTER	MEMBER GROWTH NET GOAL	MEMBER GROWTH ACTUAL	DROPPED MEMBERS ACTUAL (including transfers)
JULY/AUG/SEPT	12	10	39
OCT/NOV/DEC	12	23	43
JAN/FEB/MAR	12	22	23
APR/MAY/JUNE	14	47	54

GOALS AND ACTUAL NEW CLUBS CUMULATIVE



GOALS AND ACTUAL MEMBERS CUMULATIVE



DROPPED CLUBS: 0

19 CLUBS OF 47 ADDED 1 OR MORE NEW MEMBERS

GENDER DISTRIBUTION

MALE	540 (55.21%)
FEMALE	438 (44.79%)
NON BINARY	0 (0.00%)
PREFER NOT TO ANSWER	0 (0.00%)

DROPPED MEMBERS

DECEASED	21
CLUB CANCELLED	0
OTHER	138
TOTAL	159

[CLICK HERE FOR CUMULATIVE MEMBERSHIP DATA](#)

TOTAL FAMILY UNIT MEMBERS	201
FAMILY MEMBERS PAYING HALF DUES	105